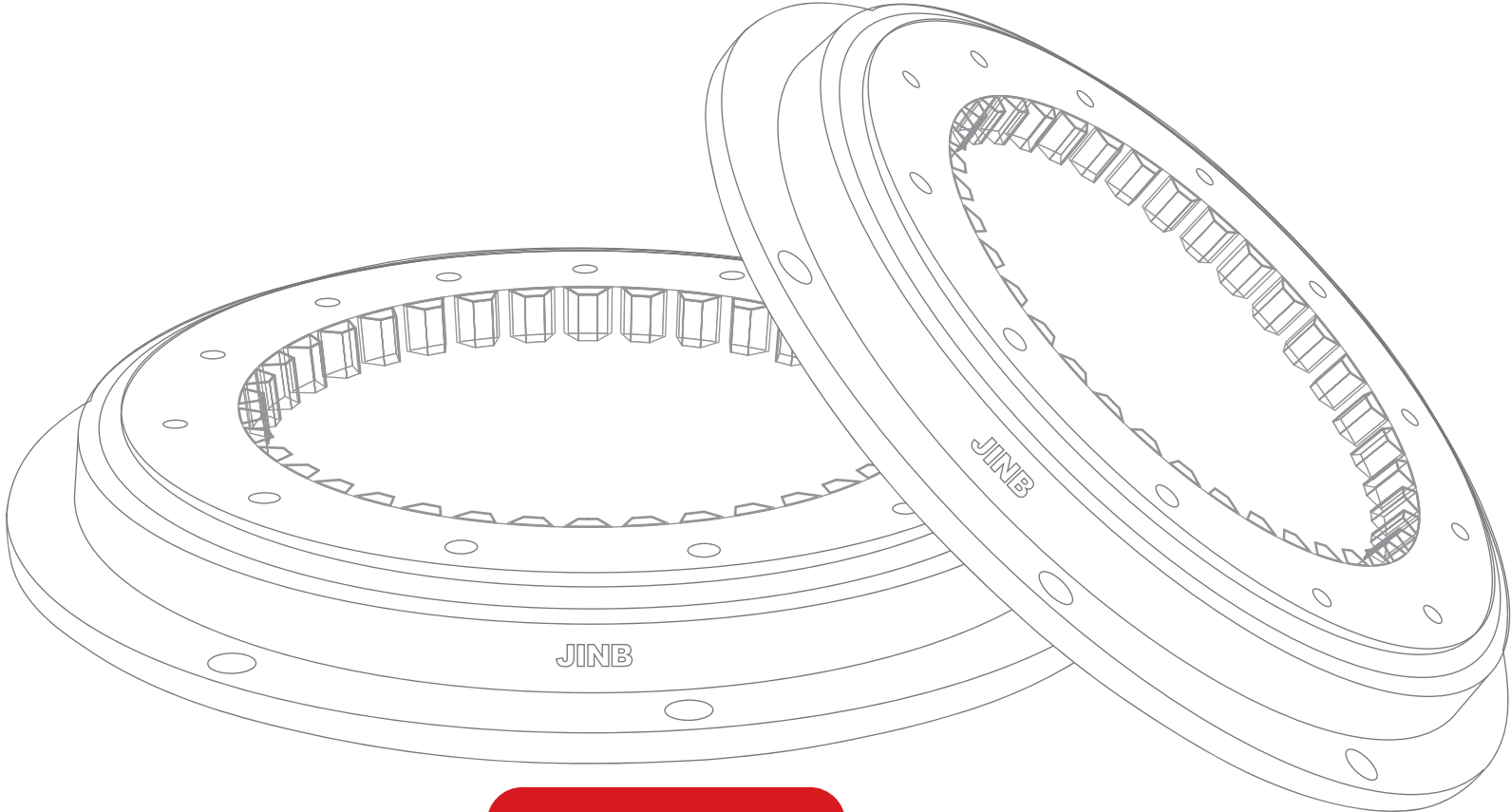




**JINB**<sup>®</sup>  
ISO 9001:2008



**上海锦承滚动轴承有限公司**  
SHANGHAI JINB BEARING CO.,LTD.



Shanghai, China

## 公司简介

上海锦承滚动轴承有限公司位于中国上海，公司成立于2001年，注册商标**JINB**，是专业的回转支承制造商和服务商，主要产品结构有单排球式、双排球式、三排球式、交叉滚柱式四大系列，公司成立至今拥有了正规化的生产基地，精良的数控生产设备，完善的质量检测体系，并通过了ISO9001:2008质量体系认证。

我们严格按照国家建筑机械行业标准 JG/T66-1999, JG/T67-1999, JG/T68-1999以及国家机械行业标准 JB/T2300-1999 生产回转支承，同时也可以按照客户要求设计和制造非标准的产品。

我们的产品主要为挖掘机，塔式起重机，汽车起重机和履带式起重机配套，还广泛应用于建筑机械、工程机械、港口机械、冶金机械、轻工机械和风力等机械领域。目前产品远销美国、英国、德国、芬兰、西班牙、俄罗斯、韩国等十几个国家和地区，**JINB**品牌正成为回转支承领域中一颗冉冉升起的新星。

公司坚持“质量为首、诚信为本”的经营原则，在“求精务实”这一企业精神的引领下，不断探索、锐意创新，努力打造精品，并致力于高精度、高寿命轴承项目的研制与开发。

为客户提供高质量产品和一流服务是我们始终追求的目标！

## Company Profile

SHANGHAI JINB BEARING CO.,LTD. is located in Shanghai, China. It was founded in 2001. **JINB** is its registered trademark. It is a professional slewing bearing manufacturer and facilitator. The structures of its main products are single row balls, double row balls, triple row balls, roller/ball combination and crossed rollers. Since its foundation, the company has owned a regularized production base, excellent numerical control production equipments and a complete quality inspection system. Besides, it has passed ISO9001:2008 quality system authentication.

We strictly stick to the national standards for the construction machinery industry of JG/T66-1999, JG/T67-1999 and JG/T68-1999 and the national standard for the mechanical industry of JB/T2300-1999 to produce slewing bearings. At the same time, we can design and manufacture non-standard products according to customers' requirements.

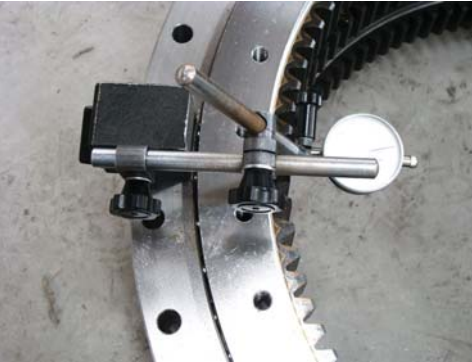
Our products are mainly for excavators, tower cranes, autocranes and crawler cranes matching. Also, products are widely used in building machinery, construction machinery, harbour machinery, metallurgical machinery, light industrial machinery and other mechanical fields such as wind power. Currently, products are exported to more than ten countries such as U.S.A., U.K., Germany, Finland, Spain, Russia and South Korea, etc. **JINB** is becoming a rising new star in the slewing bearing industry.

SHANGHAI JINB BEARING CO.,LTD. adheres to the business principle of “quality is the first and credit is the basis”. With the enterprise spirit of “pursuit of perfection and pragmatism”, we constantly explore and determinedly innovate with great efforts to make competitive products. Besides, we devote ourselves to developing high precision and long life bearings.

We always pursue the goal of providing customers with high quality products and first class service.







ISO9001:2008



ISO9001:2008

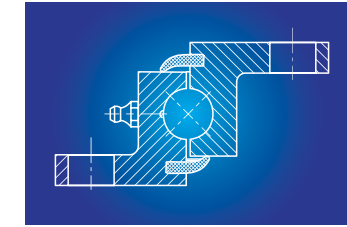
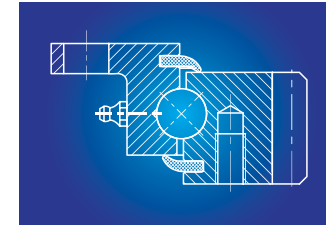
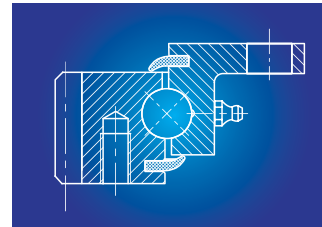
We have established a strict quality control system and meanwhile, we have advanced inspection facilities and adopt scientific inspection means. We always carry out quality control for the whole working procedure from raw materials to finished products in order to ensure the quality

Contact **JINB**

**SHANGHAI JINB BEARING CO.,LTD.**



Tel:+86(0)21-6153-6567  
 Fax:+86(0)21-6129-4432  
 Web:www.jinbearings.com  
 Email:jb@jinbearings.com



## Ball Slewing Rings with flange rings ■■■

**JINB**

Slewing rings

- ✓ Single row design with four-point raceway geometry
- ✓ Untoothed rings with flange thicknesses of 12 and 21 mm
- ✓ Ball diameters 20 and 32 mm
- ✓ Available ex stock or with a short delivery time as standard series in 14 sizes
- ✓ Raceway diameters of 314 to 1,094 mm or 955 to 1,455 mm
- ✓ For applications with light loads
- ✓ Enables lightweight structures in spite of large bearing diameters
- ✓ Applications: Handling technology, manlift platforms, turntables

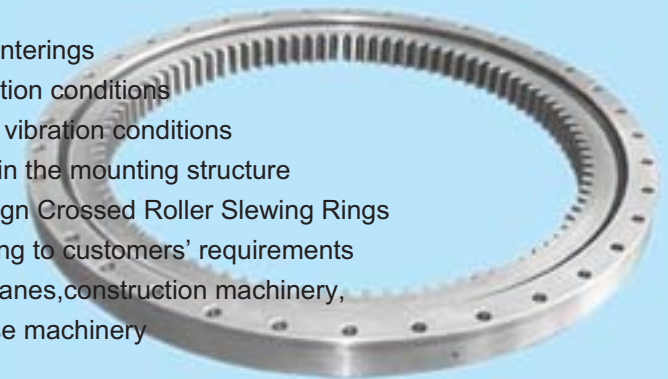
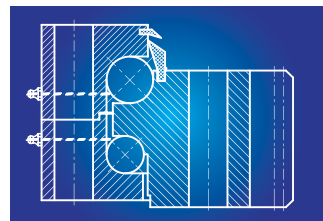
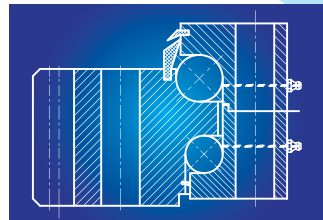


## Ball Slewing Rings ■■■

**JINB**

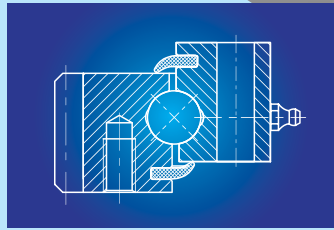
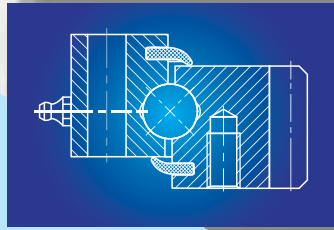
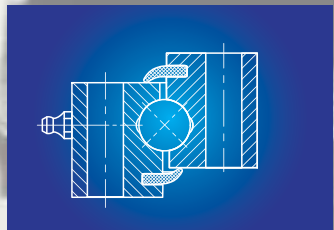
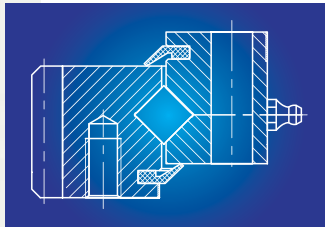
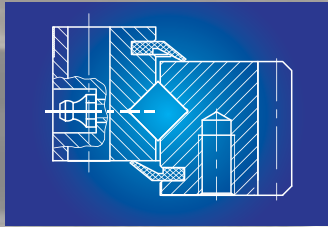
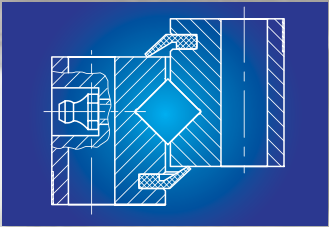
Ball Slewing Rings

- ✓ Single row and double row designs
- ✓ Ball diameters 12 to 70 mm
- ✓ Four-point raceway geometry
- ✓ Optional preloaded raceway system and centerings
- ✓ Enables robust designs for arduous application conditions
- ✓ High resistance to 'false brinelling' in heavy vibration conditions
- ✓ Reduced sensitivity to shape deformations in the mounting structure
- ✓ Higher static load capacity than similar design Crossed Roller Slewing Rings
- ✓ Often designed as special versions according to customers' requirements
- ✓ Frequently used in wind energy turbines, cranes, construction machinery, mechanical engineering and special purpose machinery





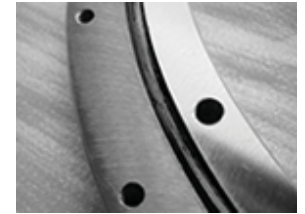
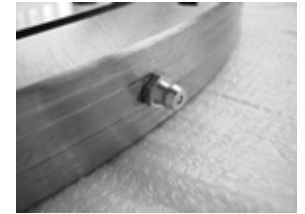
**Crossed Roller Slewing Rings** ■■■



**JINB**

Cross Roller Slewing Rings

- ✓ Single row roller raceway under 45 degrees
- ✓ Roller diameters 12 to 60 mm
- ✓ Alternately arranged rolling elements
- ✓ Constant friction torque with different loads
- ✓ Higher dynamic service life than similar Ball Slewing Ring designs
- ✓ Higher demands on the rigidity and precision of the mounting structure in comparison with Ball Slewing Rings
- ✓ Applications: Robots, antennas, medical technology, positioning devices, machine tools
- ✓ Can be supplied to special customers' requirements

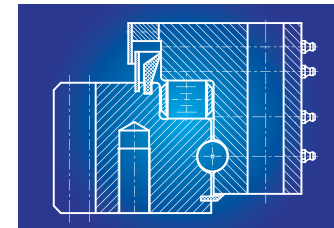


**Roller/Ball Combination Slewing Rings** ■■■

**JINB**

Combination

- ✓ Roller raceway to take up the axial loads
- ✓ Ball raceway provides support for radial loads. All parts are retained together as a unit during fitting
- ✓ Ball diameters 25 to 70 mm, roller diameters up to 100 mm
- ✓ Used in application with a dominant axial force and low radial load/tilting moments
- ✓ Standard series
- ✓ Frequently produced as special designs according to customers' requirements
- ✓ Typical applications: Bulk materials handling, stacker reclaimers, bucket wheel excavators, machine tools



### ▼ 常用材质介绍 Commonly Used Materials Introduction

材料 Material	化学成分 Chemical Components (%)								热处理 Heat Treatment
	C	Si	Mn	Cr	Mo	Ni	P	S	
S48C	0.45-0.51	0.15-0.35	0.60-0.90	≤0.20	/	≤0.20	≤0.30	≤0.35	正火或调质 Normalizing or Hardening & Tempering
50Mn	0.48-0.56	0.17-0.37	0.70-1.00	≤0.25	/	≤0.30	≤0.35	≤0.35	正火或调质 Normalizing or Hardening & Tempering
42CrMo	0.38-0.45	0.17-0.37	0.50-0.80	0.90-1.20	0.15-0.30	≤0.30	≤0.35	≤0.35	调质 Hardening & Tempering

### ▼ 常用材料对照表 Comparison Table of Commonly Used Materials

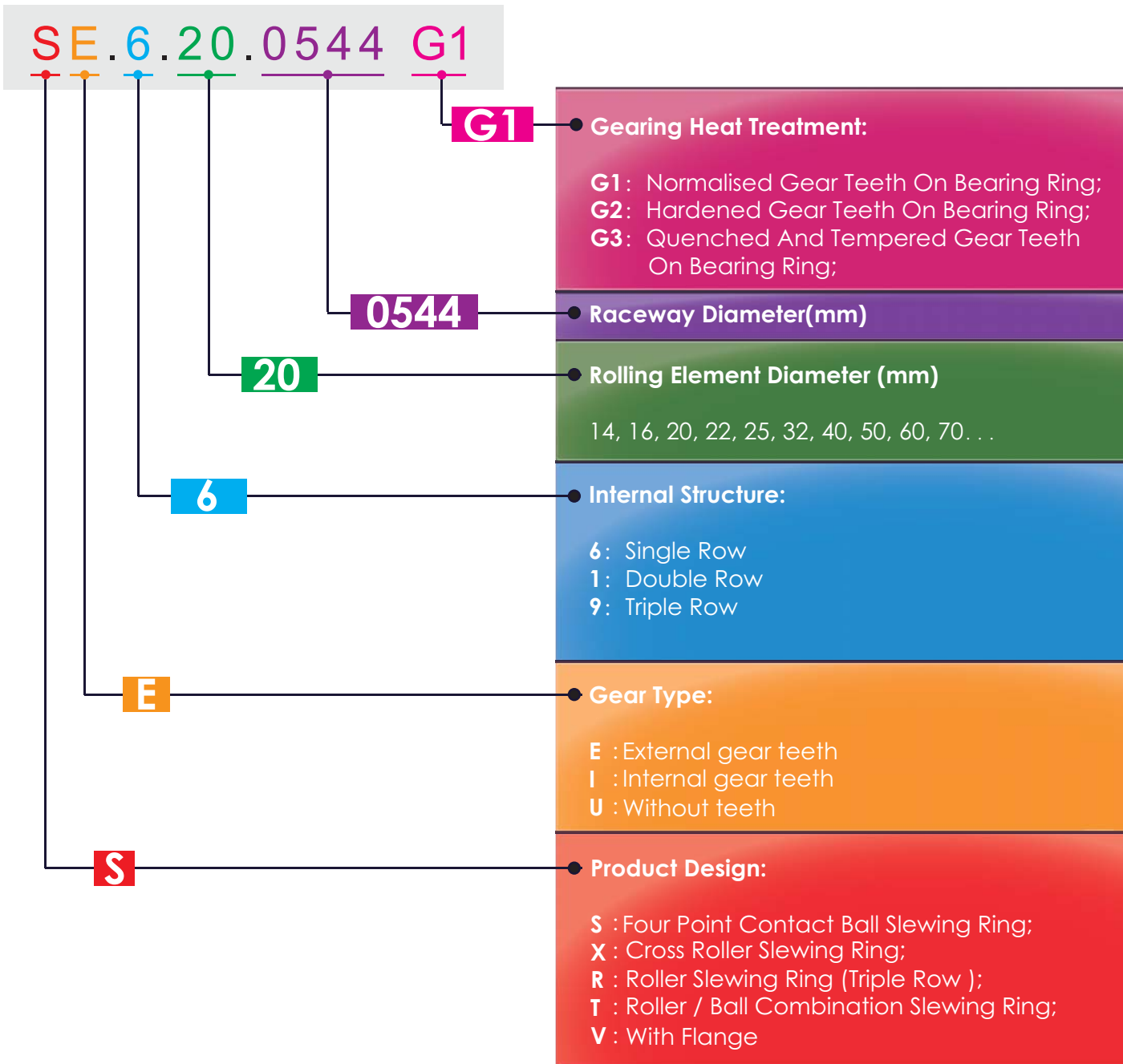
标准 Standard	中国 China (GB)	日本 Japan (JIS)	德国 Germany (DIN)	美国 USA (ASTM)	英国 Britain (BS)	法国 France (NF)	俄罗斯 Russia (ГОСТ)	国际标准 ISO
材料 Material	45-50	S48C	CK48	1045	060A47 080A47	XC48	45	R683/ I C45e
				1045				
				1049				
50Mn	S53C	CK50	1053	080A52	XC48	50T	R683/ I C50E4e	
				080M50				
42CrMo	SCM440	42CrMo4	4140	708A42	42CD4	42XM	R683/ II C50E4e	

### ▼ 齿轮类型 Gear Type

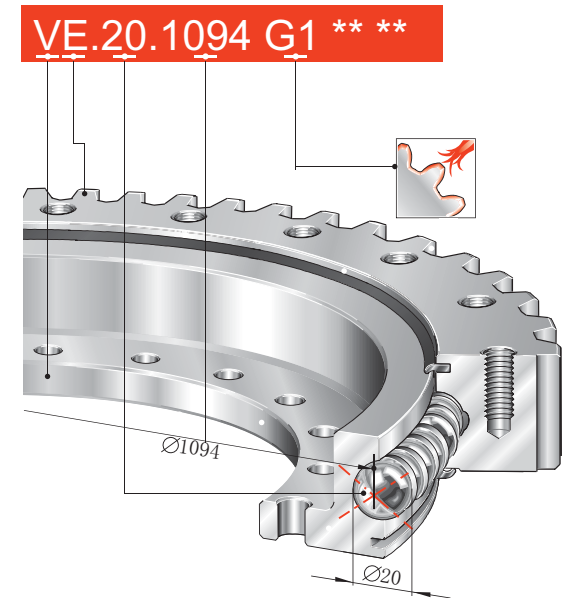
压力角 Pressure Angle	20°		25°		27°		其它 Others	
齿轮类型 Gear Type	内齿轮 Internal Gear				外齿轮 External Gear			
	直齿轮 Straight Gear		斜齿轮 Helical Gear		涡轮 Worm Wheel			
	标准齿轮 Normal Gear	短齿轮 Stub Gear	径节齿轮 Pitch Gear		双模数齿轮 Double-module Gear		双径节齿轮 Double-pitch Gear	



# Nomenclature



e.g.



four point contact bearing V020

Four point contact bearing	
Light series	V
External gear teeth	E
Rolling element diameter	20mm
Rolling element pitch circle diameter	1094mm
Normalised gear teeth	G1

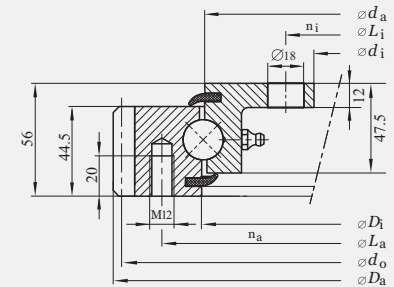
# Four point contact bearings

light series, with flange, single row, lip seals on both sides

## Bearings with external gear

\*V020 SERIES

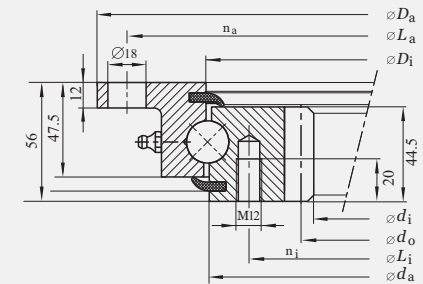
JINB No.	Dimension				Fixing holes				Gear teeth			Tooth force		Basic load ratings				Weight
	D <sub>a</sub>	D <sub>i</sub>	d <sub>i</sub>	d <sub>a</sub>	L <sub>a</sub>	n <sub>a</sub>	L <sub>i</sub>	n <sub>i</sub>	d <sub>o</sub>	m	z	F <sub>z norm</sub>	F <sub>z max</sub>	Static		Dynamic		
														C <sub>or</sub>	C <sub>oa</sub>	C <sub>r</sub>	C <sub>a</sub>	
mm	mm	mm	mm	mm	-	mm	-	mm	mm	-	kN	kN	kN	kN	kN	kN	kg	
VE.20.0314 G1	404	315.5	204	312.5	355	10	232	12	395	5	79	11.75	23.5	89	208	140	140	23
VE.20.0414 G1	503.3	415.5	304	412.5	455	10	332	12	495	5	99	15.9	23.6	248	560	111	169	29.5
VE.20.0544 G1	640.3	545.5	434	542.5	585	14	462	14	630	6	105	21.3	31.5	325	740	123	188	41.5
VE.20.0644 G1	742.3	645.5	534	642.5	685	16	562	16	732	6	122	21.3	31.5	385	880	131	200	48.5
VE.20.0744 G1	838.1	745.5	634	742.5	785	18	662	16	828	6	138	21.3	31.5	445	1010	138	211	54.5
VE.20.0844 G1	950.1	845.5	734	842.5	885	18	762	18	936	8	117	28.3	42	510	1150	145	222	65.5
VE.20.0944 G1	1046.1	945.5	834	942.5	985	20	862	20	1032	8	129	28.3	42	570	1280	151	231	71.5
VE.20.1094 G1	1198.1	1095.5	984	1092.5	1135	22	1012	20	1184	8	148	28.3	42	660	1490	160	244	83.5



## Bearings with internal gear

\*V020 SERIES

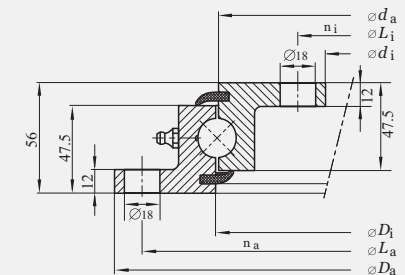
JINB No.	Dimension				Fixing holes				Gear teeth			Tooth force		Basic load ratings				Weight
	D <sub>a</sub>	D <sub>i</sub>	d <sub>i</sub>	d <sub>a</sub>	L <sub>a</sub>	n <sub>a</sub>	L <sub>i</sub>	n <sub>i</sub>	d <sub>o</sub>	m	z	F <sub>z norm</sub>	F <sub>z max</sub>	Static		Dynamic		
														C <sub>or</sub>	C <sub>oa</sub>	C <sub>r</sub>	C <sub>a</sub>	
mm	mm	mm	mm	mm	-	mm	-	mm	mm	-	kN	kN	kN	kN	kN	kN	kg	
VI.20.0314 G1	418	315.5	225	312.5	390	8	275	12	235	5	47	11.9	22.7	89	208	140	140	21
VI.20.0414 G1	518	415.5	325	412.5	490	8	375	12	335	5	67	17.7	26.2	110	295	111	169	27.5
VI.20.0544 G1	648	545.5	444	542.5	620	10	505	16	456	6	76	23.7	35	145	385	123	188	38.0
VI.20.0644 G1	748	645.5	546	642.5	720	12	605	18	558	6	93	23.7	35	171	455	131	200	45.0
VI.20.0744 G1	848	745.5	648	742.5	820	12	705	20	660	6	110	23.7	35	198	530	138	211	51.5
VI.20.0844 G1	948	845.5	736	842.5	920	14	805	20	752	8	94	31.4	46.7	224	600	145	222	61.5
VI.20.0944 G1	1048	945.5	840	942.5	1020	16	905	22	856	8	107	31.4	46.7	250	670	151	231	67.5
VI.20.1094 G1	1198	1095.5	984	1092.5	1170	16	1055	24	1000	8	125	31.4	46.7	290	770	160	244	81.5



## Bearings ungeared

\*V020 SERIES

JINB No.	Dimension				Fixing holes				Basic load ratings				Weight
	D <sub>a</sub>	D <sub>i</sub>	d <sub>i</sub>	d <sub>a</sub>	L <sub>a</sub>	n <sub>a</sub>	L <sub>i</sub>	n <sub>i</sub>	Static		Dynamic		
									C <sub>or</sub>	C <sub>oa</sub>	C <sub>r</sub>	C <sub>a</sub>	
mm	mm	mm	mm	mm	-	mm	-	kN	kN	kN	kN	kg	
VU.20.0314	418	315.5	204	312.5	390	8	232	12	89	208	140	140	19
VU.20.0414	518	415.5	304	412.5	490	8	332	12	110	295	111	169	23.5
VU.20.0544	648	545.5	434	542.5	620	10	462	14	145	385	123	188	31.0
VU.20.0644	748	645.5	534	642.5	720	12	562	16	171	455	131	200	36.5
VU.20.0744	848	745.5	634	742.5	820	12	662	16	198	530	138	211	42.5
VU.20.0844	948	845.5	734	842.5	920	14	762	18	224	600	145	222	48.0
VU.20.0944	1048	945.5	834	942.5	1020	16	862	20	250	670	151	231	54.0
VU.20.1094	1198	1095.5	984	1092.5	1170	16	1012	20	290	770	160	244	62.5



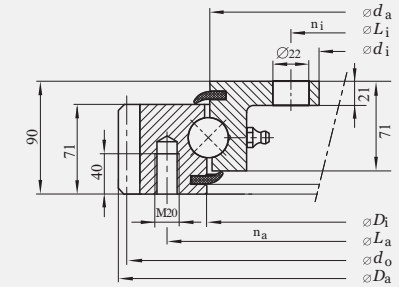
- For more information please contact JINB !



**Bearings with external gear**

\*V032 SERIES

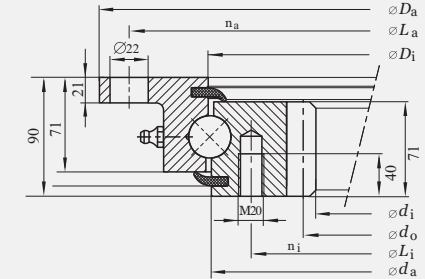
JINB No.	Dimension				Fixing holes				Gear teeth			Tooth force		Basic load ratings				Weight
	D <sub>a</sub>	D <sub>i</sub>	d <sub>i</sub>	d <sub>a</sub>	L <sub>a</sub>	n <sub>a</sub>	L <sub>i</sub>	n <sub>i</sub>	d <sub>o</sub>	m	z	F <sub>z norm</sub>	F <sub>z max</sub>	Static		Dynamic		
														C <sub>or</sub>	C <sub>oa</sub>	C <sub>r</sub>	C <sub>a</sub>	
mm	mm	mm	mm	mm	-	mm	-	mm	mm	-	kN	kN	kN	kN	kN	kN	kg	
VE.32.0955 G1	1096.2	955	805	955	1016	30	845	30	1080	9	120	36	65	1029	2754	411	479	165
VE.32.1055 G1	1198	1055	905	1055	1116	30	945	30	1180	10	118	43	76	1137	3043	427	497	183
VE.32.1155 G1	1298	1155	1005	1155	1216	36	1045	36	1280	10	128	43	76	1245	3331	442	514	200
VE.32.1255 G1	1398	1255	1105	1255	1316	42	1145	42	1380	10	138	43	76	1353	3619	456	531	216
VE.32.1355 G1	1498	1355	1205	1355	1416	42	1245	42	1480	10	148	43	76	1460	3908	469	546	234
VE.32.1455 G1	1598	1455	1305	1455	1516	48	1345	48	1580	10	158	43	76	1568	4196	482	561	250



**Bearings with internal gear**

\*V032 SERIES

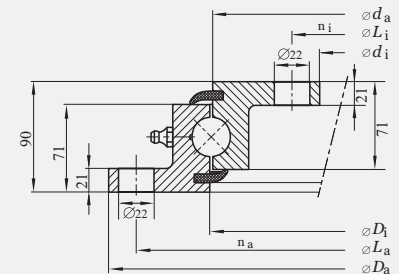
JINB No.	Dimension				Fixing holes				Gear teeth			Tooth force		Basic load ratings				Weight
	D <sub>a</sub>	D <sub>i</sub>	d <sub>i</sub>	d <sub>a</sub>	L <sub>a</sub>	n <sub>a</sub>	L <sub>i</sub>	n <sub>i</sub>	d <sub>o</sub>	m	z	F <sub>z norm</sub>	F <sub>z max</sub>	Static		Dynamic		
														C <sub>or</sub>	C <sub>oa</sub>	C <sub>r</sub>	C <sub>a</sub>	
mm	mm	mm	mm	mm	-	mm	-	mm	mm	-	kN	kN	kN	kN	kN	kN	kg	
VI.32.0955 G1	1100	955	812	955	1060	30	894	30	830	10	83	47	86	1029	2754	411	479	159
VI.32.1055 G1	1200	1055	912	1055	1160	30	994	30	930	10	93	47	86	1137	3043	427	497	176
VI.32.1155 G1	1300	1155	1012	1155	1260	36	1094	36	1030	10	103	47	86	1245	3331	442	514	192
VI.32.1255 G1	1400	1255	1112	1255	1360	42	1194	42	1130	10	113	47	86	1353	3619	456	531	208
VI.32.1355 G1	1500	1355	1212	1355	1460	42	1294	42	1230	10	123	47	86	1460	3908	469	546	226
VI.32.1455 G1	1600	1455	1312	1455	1560	48	1394	48	1330	10	133	47	86	1568	4196	482	561	243



**Bearings ungeared**

\*V032 SERIES

JINB No.	Dimension				Fixing holes				Basic load ratings				Weight
	D <sub>a</sub>	D <sub>i</sub>	d <sub>i</sub>	d <sub>a</sub>	L <sub>a</sub>	n <sub>a</sub>	L <sub>i</sub>	n <sub>i</sub>	Static		Dynamic		
									C <sub>or</sub>	C <sub>oa</sub>	C <sub>r</sub>	C <sub>a</sub>	
mm	mm	mm	mm	mm	-	mm	-	kN	kN	kN	kN	kg	
VU.32.0955	1100	955	805	955	1060	30	845	30	1029	2754	411	479	131
VU.32.1055	1200	1055	905	1055	1160	30	945	30	1137	3043	427	497	145
VU.32.1155	1300	1155	1005	1155	1260	36	1045	36	1245	3331	442	514	159
VU.32.1255	1400	1255	1105	1255	1360	42	1145	42	1353	3619	456	531	172
VU.32.1355	1500	1355	1205	1355	1460	42	1245	42	1460	3908	469	546	186
VU.32.1455	1600	1455	1305	1455	1560	48	1345	48	1568	4196	482	561	200



- For more information please contact JINB !

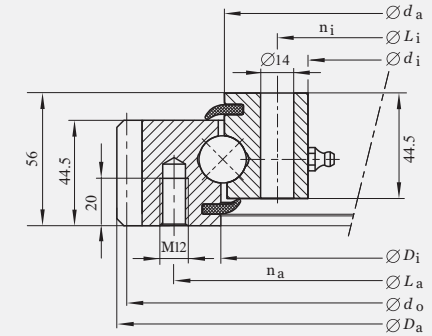
# Four point contact bearings

standard series, single row, lip seals on both sides

## Bearings with external gear

\*S620 SERIES

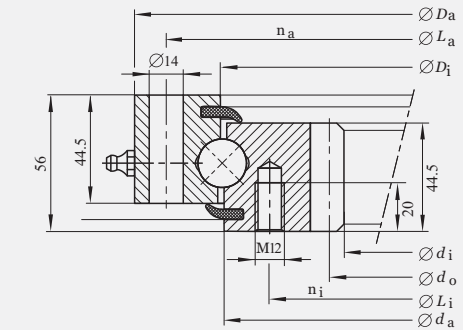
JINB No.	Dimension				Fixing holes				Gear teeth			Tooth force		Basic load ratings				Weight
	D <sub>a</sub>	D <sub>i</sub>	d <sub>i</sub>	d <sub>a</sub>	L <sub>a</sub>	n <sub>a</sub>	L <sub>i</sub>	n <sub>i</sub>	d <sub>o</sub>	m	z	F <sub>z norm</sub>	F <sub>z max</sub>	Static		Dynamic		
														C <sub>or</sub>	C <sub>oa</sub>	C <sub>r</sub>	C <sub>a</sub>	
mm	mm	mm	mm	mm	-	mm	-	mm	mm	-	kN	kN	kN	kN	kN	kN	kg	
SE.6.20.0314 G1	403.3	315.5	242	312.5	355	20	268	20	395	5	79	11.75	23.5	192	448	99	140	23
SE.6.20.0414 G1	503.3	415.5	342	412.5	455	20	368	24	495	5	99	15.9	23.6	248	560	111	169	31
SE.6.20.0544 G1	640.3	545.5	472	542.5	585	28	498	32	630	6	105	21.3	31.5	325	740	123	188	43
SE.6.20.0644 G1	742.3	645.5	572	642.5	685	32	598	36	732	6	122	21.3	31.5	385	880	131	200	52
SE.6.20.0744 G1	838.1	745.5	672	742.5	785	36	698	40	828	6	138	21.3	31.5	445	1010	138	211	59
SE.6.20.0844 G1	950.1	845.5	772	842.5	885	36	798	40	936	8	117	28.3	42	510	1150	145	222	71
SE.6.20.0944 G1	1046.1	945.5	872	942.5	985	40	898	44	1032	8	129	28.3	42	570	1280	151	231	77
SE.6.20.1094 G1	1198.1	1095.5	1022	1092.5	1135	44	1048	48	1184	8	148	28.3	42	660	1490	160	244	91



## Bearings with internal gear

\*S620 SERIES

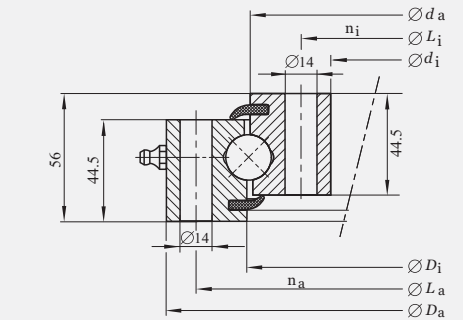
JINB No.	Dimension				Fixing holes				Gear teeth			Tooth force		Basic load ratings				Weight
	D <sub>a</sub>	D <sub>i</sub>	d <sub>i</sub>	d <sub>a</sub>	L <sub>a</sub>	n <sub>a</sub>	L <sub>i</sub>	n <sub>i</sub>	d <sub>o</sub>	m	z	F <sub>z norm</sub>	F <sub>z max</sub>	Static		Dynamic		
														C <sub>or</sub>	C <sub>oa</sub>	C <sub>r</sub>	C <sub>a</sub>	
mm	mm	mm	mm	mm	-	mm	-	mm	mm	-	kN	kN	kN	kN	kN	kN	kg	
SI.6.20.0314 G1	386	315.5	225	312.5	360	20	275	24	235	5	47	11.9	22.7	192	448	140	140	22
SI.6.20.0414 G1	486	415.5	325	412.5	460	24	375	24	335	5	67	177	262	2480	5600	1110	1690	31
SI.6.20.0544 G1	616	545.5	444	542.5	590	32	505	32	456	6	76	237	350	3250	7400	1230	1880	42
SI.6.20.0644 G1	716	645.5	546	642.5	690	36	605	36	558	6	93	237	350	3850	8800	1310	2000	50
SI.6.20.0744 G1	816	745.5	648	742.5	790	40	705	40	660	6	110	237	350	4450	10100	1380	2110	58
SI.6.20.0844 G1	916	845.5	736	842.5	890	40	805	40	752	8	94	314	467	5100	11500	1450	2220	69
SI.6.20.0944 G1	1016	945.5	840	942.5	990	44	905	44	856	8	107	314	467	5700	12800	1510	2310	76
SI.6.20.1094 G1	1166	1095.5	984	1092.5	1140	48	1055	48	1000	8	125	314	467	6600	14900	2440	1600	91



## Bearings ungeared

\*S620 SERIES

JINB No.	Dimension				Fixing holes				Basic load ratings				Weight
	D <sub>a</sub>	D <sub>i</sub>	d <sub>i</sub>	d <sub>a</sub>	L <sub>a</sub>	n <sub>a</sub>	L <sub>i</sub>	n <sub>i</sub>	Static		Dynamic		
									C <sub>or</sub>	C <sub>oa</sub>	C <sub>r</sub>	C <sub>a</sub>	
mm	mm	mm	mm	mm	-	mm	-	kN	kN	kN	kN	kg	
SU.6.20.0314	386	315.5	242	312.5	360	20	268	20	192	448	140	140	21
SU.6.20.0414	486	415.5	342	412.5	460	24	368	24	248	560	111	169	29
SU.6.20.0544	616	545.5	472	542.5	590	32	498	32	325	740	123	188	37
SU.6.20.0644	716	645.5	572	642.5	690	36	598	36	385	880	131	200	44
SU.6.20.0744	816	745.5	672	742.5	790	40	698	40	445	1010	138	211	52
SU.6.20.0844	916	845.5	772	842.5	890	40	798	40	510	1150	145	222	60
SU.6.20.0944	1016	945.5	872	942.5	990	44	898	44	570	1280	151	231	67
SU.6.20.1094	1166	1095.5	1022	1092.5	1140	48	1048	48	660	1490	160	244	77

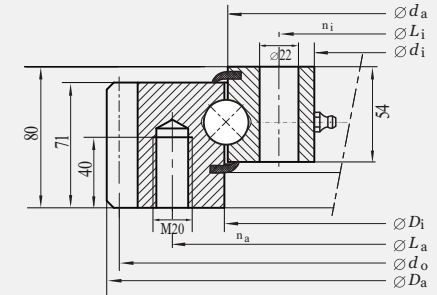


- For more information please contact JINB !

**Bearings with external gear**

\*S625 SERIES

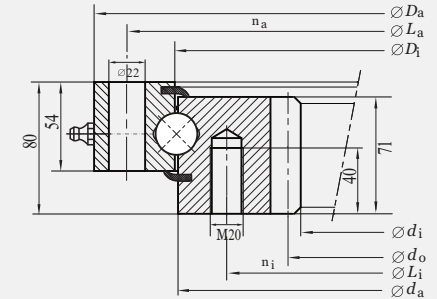
JINB No.	Dimension				Fixing holes				Gear teeth			Tooth force		Basic load ratings				Weight
	D <sub>a</sub>	D <sub>i</sub>	d <sub>i</sub>	d <sub>a</sub>	L <sub>a</sub>	n <sub>a</sub>	L <sub>i</sub>	n <sub>i</sub>	d <sub>o</sub>	m	z	F <sub>z norm</sub>	F <sub>z max</sub>	Static		Dynamic		
														C <sub>or</sub>	C <sub>oa</sub>	C <sub>r</sub>	C <sub>a</sub>	
mm	mm	mm	mm	mm	-	mm	-	mm	mm	-	kN	kN	kN	kN	kN	kN	kg	
SE.6.25.0455 G1	590.4	457	355	453	516	18	395	18	576	8	72	28	52	453	1213	249	289	74
SE.6.25.0555 G1	694.4	557	455	553	616	20	495	20	680	8	85	28	52	553	1480	268	311	93
SE.6.25.0655 G1	798.4	657	555	653	716	24	595	24	784	8	98	28	52	653	1746	284	331	111
SE.6.25.0755 G1	898	753	655	757	816	24	695	24	882	9	98	55.1	80.2	1010	2250	300	460	128
SE.6.25.0855 G1	997	853	755	857	916	28	795	28	981	9	109	55.1	80.2	1150	2550	315	485	145
SE.6.25.0955 G1	1096	953	855	957	1016	30	895	30	1080	9	120	55.1	80.2	1280	2850	330	500	155
SE.6.25.1055 G1	1198	1053	955	1057	1116	30	995	30	1180	10	118	61.2	89	1410	3150	340	520	171
SE.6.25.1155 G1	1298	1157	1055	1153	1216	36	1095	36	1280	10	128	43	76	1151	3080	351	409	186
SE.6.25.1255 G1	1398	1257	1155	1253	1316	42	1195	42	1380	10	138	43	76	1240	3346	364	424	201
SE.6.25.1355 G1	1498	1357	1255	1353	1416	42	1295	42	1480	10	148	43	76	1350	3613	374	435	218
SE.6.25.1455 G1	1598	1457	1355	1453	1516	48	1395	48	1580	10	158	43	76	1450	3879	383	447	233



**Bearings with internal gear**

\*S625 SERIES

JINB No.	Dimension				Fixing holes				Gear teeth			Tooth force		Basic load ratings				Weight
	D <sub>a</sub>	D <sub>i</sub>	d <sub>i</sub>	d <sub>a</sub>	L <sub>a</sub>	n <sub>a</sub>	L <sub>i</sub>	n <sub>i</sub>	d <sub>o</sub>	m	z	F <sub>z norm</sub>	F <sub>z max</sub>	Static		Dynamic		
														C <sub>or</sub>	C <sub>oa</sub>	C <sub>r</sub>	C <sub>a</sub>	
mm	mm	mm	mm	mm	-	mm	-	mm	mm	-	kN	kN	kN	kN	kN	kN	kg	
SI.6.25.0455 G1	555	457	304	453	515	18	394	18	320	8	40	32	64	453	1213	249	289	64
SI.6.25.0555 G1	655	557	416	553	615	20	494	20	432	8	54	32	64	553	1480	268	311	76
SI.6.25.0655 G1	755	657	512	653	715	24	594	24	528	8	66	32	64	653	1746	284	331	102
SI.6.25.0755 G1	855	753	610	757	815	24	694	24	630	10	63	47	86	532	2013	300	349	119
SI.6.25.0855 G1	955	853	710	857	915	28	794	28	730	10	73	47	86	852	2280	316	367	137
SI.6.25.0955 G1	1055	953	810	957	1015	30	894	30	830	10	83	47	86	952	2546	328	382	149
SI.6.25.1055 G1	1155	1053	910	1057	1115	30	994	30	930	10	93	47	86	1051	2813	340	396	165
SI.6.25.1155 G1	1255	1157	1010	1153	1215	36	1094	36	1030	10	103	47	86	1151	3080	351	409	180
SI.6.25.1255 G1	1355	1257	1110	1253	1315	42	1194	42	1130	10	113	47	86	1240	3346	364	424	195
SI.6.25.1355 G1	1455	1357	1210	1353	1415	42	1294	42	1230	10	123	47	86	1350	3613	374	435	212
SI.6.25.1455 G1	1555	1457	1310	1453	1515	48	1394	48	1330	10	133	47	86	1450	3879	383	447	227



- For more information please contact JINB !



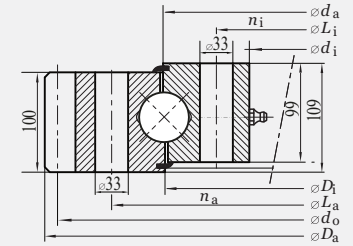
# Four point contact bearings

standard series, single row, lip seals on both sides

## Bearings with external gear

\*S650 SERIES

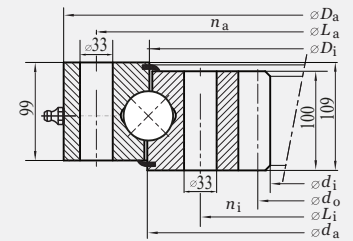
JINB No.	Dimension				Fixing holes				Gear teeth			Tooth force		Basic load ratings				Weight
	D <sub>a</sub>	D <sub>i</sub>	d <sub>i</sub>	d <sub>a</sub>	L <sub>a</sub>	n <sub>a</sub>	L <sub>i</sub>	n <sub>i</sub>	d <sub>o</sub>	m	z	F <sub>z norm</sub>	F <sub>z max</sub>	Static		Dynamic		
														C <sub>or</sub>	C <sub>oa</sub>	C <sub>r</sub>	C <sub>a</sub>	
mm	mm	mm	mm	mm	-	mm	-	mm	mm	-	kN	kN	kN	kN	kN	kN	kg	
SE.6.50.1900 G3	2139.2	1898	1729	1902	2005	36	1795	36	2100	14	150	132	229	3323	8891	1129	1315	820
SE.6.50.2130 G3	2380.8	2128	1959	2132	2235	48	2025	48	2336	16	146	155	273	3725	9968	1177	1371	931
SE.6.50.2355 G3	2604.8	2353	2184	2357	2460	54	2250	54	2560	16	160	155	273	4118	11020	1223	1425	1024
SE.6.50.2645 G3	2892.8	2643	2474	2647	2750	60	2540	60	2848	16	178	155	273	4625	12378	1279	1490	1142



## Bearings with internal gear

\*S650 SERIES

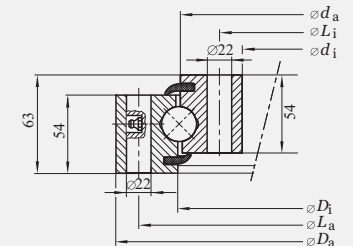
JINB No.	Dimension				Fixing holes				Gear teeth			Tooth force		Basic load ratings				Weight
	D <sub>a</sub>	D <sub>i</sub>	d <sub>i</sub>	d <sub>a</sub>	L <sub>a</sub>	n <sub>a</sub>	L <sub>i</sub>	n <sub>i</sub>	d <sub>o</sub>	m	z	F <sub>z norm</sub>	F <sub>z max</sub>	Static		Dynamic		
														C <sub>or</sub>	C <sub>oa</sub>	C <sub>r</sub>	C <sub>a</sub>	
mm	mm	mm	mm	mm	-	mm	-	mm	mm	-	kN	kN	kN	kN	kN	kN	kg	
SI.6.50.1800 G3	1971	1798	1554	1802	1905	36	1695	36	1568	14	112	141	254	3148	8423	1105	1286	762
SI.6.50.2000 G3	2171	1998	1764	2002	2105	40	1895	40	1778	14	127	141	254	3457	9359	1153	1343	843
SI.6.50.2240 G3	2411	2238	1984	2242	2345	48	2135	48	2000	16	125	166	290	3917	10482	1198	1395	961
SI.6.50.2490 G3	2661	2488	2240	2492	2595	54	2385	54	2256	16	141	166	290	4354	11652	1250	1256	1053
SI.6.50.2800 G3	2971	2798	2544	2802	2905	60	2695	60	2560	16	160	166	290	4896	13103	1301	1516	1205



## Bearings ungeared

\*S625 SERIES

JINB No.	Dimension				Fixing holes				Basic load ratings				Weight
	D <sub>a</sub>	D <sub>i</sub>	d <sub>i</sub>	d <sub>a</sub>	L <sub>a</sub>	n <sub>a</sub>	L <sub>i</sub>	n <sub>i</sub>	Static		Dynamic		
									C <sub>or</sub>	C <sub>oa</sub>	C <sub>r</sub>	C <sub>a</sub>	
mm	mm	mm	mm	mm	-	mm	-	kN	kN	kN	kN	kg	
SU.6.25.0455	555	457	355	453	515	18	395	18	453	1213	249	289	53
SU.6.25.0555	655	557	455	553	615	20	495	20	553	1480	268	311	65
SU.6.25.0655	755	657	555	653	715	24	595	24	653	1746	284	331	76
SU.6.25.0755	855	753	655	757	815	24	695	24	752	2013	300	349	90
SU.6.25.0855	955	853	755	857	915	28	795	28	852	2280	316	367	101
SU.6.25.0955	1055	953	855	957	1015	30	895	30	952	2546	328	382	115
SU.6.25.1055	1155	1053	955	1057	1115	30	995	30	1051	2813	340	396	128
SU.6.25.1155	1255	1157	1055	1153	1215	36	1095	36	1151	3080	351	409	139
SU.6.25.1255	1355	1257	1155	1253	1315	42	1195	42	1240	3346	364	424	150
SU.6.25.1355	1455	1357	1255	1353	1415	42	1295	42	1350	3613	374	435	163
SU.6.25.1455	1555	1457	1355	1453	1515	48	1395	48	1450	3879	383	447	174

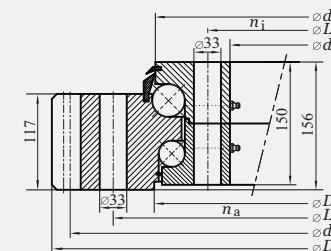


- For more information please contact JINB !

**Bearings with external gear**

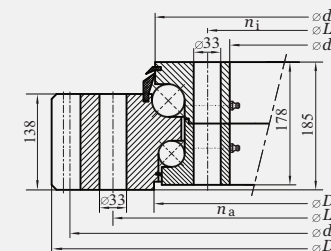
**\*S140 SERIES**

JINB No.	Dimension				Fixing holes				Gear teeth			Tooth force		Basic load ratings				Weight
	D <sub>a</sub>	D <sub>i</sub>	d <sub>i</sub>	d <sub>a</sub>	L <sub>a</sub>	n <sub>a</sub>	L <sub>i</sub>	n <sub>i</sub>	d <sub>o</sub>	m	z	F <sub>z norm</sub>	F <sub>z max</sub>	Static		Dynamic		
														C <sub>or</sub>	C <sub>oa</sub>	C <sub>r</sub>	C <sub>a</sub>	
mm	mm	mm	mm	mm	-	mm	-	mm	mm	-	kN	kN	kN	kN	kN	kN	kg	
SE.1.40.2240 G3	2524.8	2275	2090	2272	2375	48	2145	48	2480	16	155	176	307	2102	9606	536	1136	1316
SE.1.40.2619 G3	2912.4	2654	2465	2651	2755	52	2520	52	2862	18	159	205	357	2459	11234	568	1204	1615
SE.1.40.2795 G3	3096	2830	2645	2827	2930	54	2700	54	3040	20	152	233	408	2625	11990	580	1233	1723
SE.1.40.2915 G3	3216	2950	2765	2947	3050	60	2820	60	3160	20	158	233	408	2738	12505	590	1254	1790
SE.1.40.3150 G3	3456	3185	3000	3182	3285	60	3065	60	3400	20	170	233	408	2959	13515	607	1288.5	1969



**\*S150 SERIES**

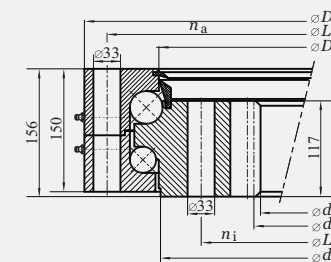
JINB No.	Dimension				Fixing holes				Gear teeth			Tooth force		Basic load ratings				Weight
	D <sub>a</sub>	D <sub>i</sub>	d <sub>i</sub>	d <sub>a</sub>	L <sub>a</sub>	n <sub>a</sub>	L <sub>i</sub>	n <sub>i</sub>	d <sub>o</sub>	m	z	F <sub>z norm</sub>	F <sub>z max</sub>	Static		Dynamic		
														C <sub>or</sub>	C <sub>oa</sub>	C <sub>r</sub>	C <sub>a</sub>	
mm	mm	mm	mm	mm	-	mm	-	mm	mm	-	kN	kN	kN	kN	kN	kN	kg	
SE.1.50.2987 G3	3290.4	3022	2820	3025	3130	66	2880	66	3240	18	180	227	403	3424	15541	749	1591	2288
SE.1.50.3167 G3	3470.4	3202	3000	3205	3310	66	3060	66	3420	18	190	227	403	3631	16478	766	1624.5	2431
SE.1.50.3347 G3	3650.4	3382	3180	3385	3490	72	3240	72	3600	18	200	227	403	3838	17416	782	1661	2566
SE.1.50.3567 G3	3866.4	3602	3400	3605	3710	78	3460	78	3816	18	212	227	403	4091	18562	799	1697	2702
SE.1.50.3747 G3	4046.4	3782	3580	3785	3890	84	3640	84	3996	18	222	227	403	4298	19500	814	1731	2837
SE.1.50.4140 G3	4456	4175	3970	4178	4285	90	4030	90	4400	20	220	260	465	4750	21548	844	1794.5	3282



**Bearings with internal gear**

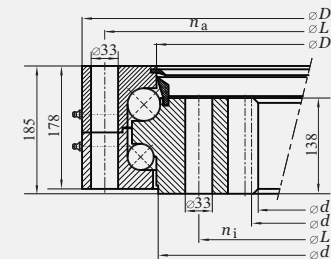
**\*S140 SERIES**

JINB No.	Dimension				Fixing holes				Gear teeth			Tooth force		Basic load ratings				Weight
	D <sub>a</sub>	D <sub>i</sub>	d <sub>i</sub>	d <sub>a</sub>	L <sub>a</sub>	n <sub>a</sub>	L <sub>i</sub>	n <sub>i</sub>	d <sub>o</sub>	m	z	F <sub>z norm</sub>	F <sub>z max</sub>	Static		Dynamic		
														C <sub>or</sub>	C <sub>oa</sub>	C <sub>r</sub>	C <sub>a</sub>	
mm	mm	mm	mm	mm	-	mm	-	mm	mm	-	kN	kN	kN	kN	kN	kN	kg	
SI.1.40.2199 G3	2350	2168	1920	2164	2295	52	2065	52	1936	16	121	178	338	2078	9461	532	1133.5	1238
SI.1.40.2622 G3	2770	2590	2336	2587	2715	60	2485	60	2352	16	147	178	338	2477	11451	568	1206.5	1495
SI.1.40.2950 G3	3100	2918	2646	2915	3045	60	2815	60	2664	18	148	214	385	2786	12687	594	1260	1764
SI.1.40.3300 G3	3450	3268	3006	3265	3395	66	3165	66	3024	18	148	214	385	3115	14190	619	1312	1935



**\*S150 SERIES**

JINB No.	Dimension				Fixing holes				Gear teeth			Tooth force		Basic load ratings				Weight
	D <sub>a</sub>	D <sub>i</sub>	d <sub>i</sub>	d <sub>a</sub>	L <sub>a</sub>	n <sub>a</sub>	L <sub>i</sub>	n <sub>i</sub>	d <sub>o</sub>	m	z	F <sub>z norm</sub>	F <sub>z max</sub>	Static		Dynamic		
														C <sub>or</sub>	C <sub>oa</sub>	C <sub>r</sub>	C <sub>a</sub>	
mm	mm	mm	mm	mm	-	mm	-	mm	mm	-	kN	kN	kN	kN	kN	kN	kg	
SI.1.50.2559 G3	2725	3509	2250	3597	3638	76	3418	76	3712	16	232	165	294	1083	18904	319	2777	2028
SI.1.50.3040 G3	3205	3709	2720	3797	3846	80	3618	80	3936	16	246	165	294	1145	19971	325	2853.5	2186
SI.1.50.3520 G3	3685	3959	3200	4047	4086	84	3868	84	4176	16	261	165	294	1223	21305	333	2953	2278
SI.1.50.3839 G3	4005	4209	3520	4297	4342	90	4118	90	4416	16	276	165	294	1300	22639	341	3043.5	2455

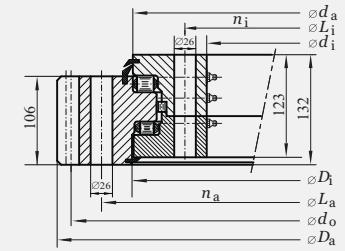


- For more information please contact JINB !

## Bearings with external gear

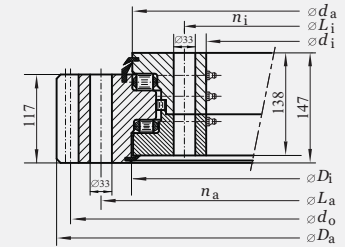
### \*R920 SERIES

JINB No.	Dimension				Fixing holes				Gear teeth			Tooth force		Basic load ratings				Weight
	D <sub>a</sub>	D <sub>i</sub>	d <sub>i</sub>	d <sub>a</sub>	L <sub>a</sub>	n <sub>a</sub>	L <sub>i</sub>	n <sub>i</sub>	d <sub>o</sub>	m	z	F <sub>z norm</sub>	F <sub>z max</sub>	Static		Dynamic		
														C <sub>or</sub>	C <sub>oa</sub>	C <sub>r</sub>	C <sub>a</sub>	
mm	mm	mm	mm	mm	-	mm	-	mm	mm	-	kN	kN	kN	kN	kN	kN	kg	
RE.9.20.1250 G3	1461.6	1282	1103	1280	1355	36	1155	36	1428	12	119	107	187	587	5903	410	1272	542
RE.9.20.1400 G3	1635.2	1432	1253	1430	1505	36	1305	36	1596	14	114	136	236	660	6612.5	436	1350.5	646
RE.9.20.1600 G3	1831.2	1632	1453	1630	1705	40	1505	40	1792	14	128	136	236	757	7558	469	1451.5	731
RE.9.20.1800 G3	2044.8	1832	1653	1830	1905	46	1705	46	2000	16	125	163	285	854	8503.5	500	1548	844
RE.9.20.2000 G3	2236.8	2032	1853	2030	2105	54	1905	54	2192	16	137	163	285	951	9449	529	1635	912



### \*R925 SERIES

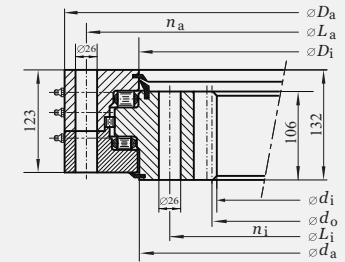
JINB No.	Dimension				Fixing holes				Gear teeth			Tooth force		Basic load ratings				Weight
	D <sub>a</sub>	D <sub>i</sub>	d <sub>i</sub>	d <sub>a</sub>	L <sub>a</sub>	n <sub>a</sub>	L <sub>i</sub>	n <sub>i</sub>	d <sub>o</sub>	m	z	F <sub>z norm</sub>	F <sub>z max</sub>	Static		Dynamic		
														C <sub>or</sub>	C <sub>oa</sub>	C <sub>r</sub>	C <sub>a</sub>	
mm	mm	mm	mm	mm	-	mm	-	mm	mm	-	kN	kN	kN	kN	kN	kN	kg	
RE.9.25.1800 G3	2076.8	1826	1619	1836	1925	36	1685	36	2032	16	127	172	303	1348	10308	728	2108	1126
RE.9.25.2000 G3	2298.8	2026	1819	2036	2125	44	1885	44	2224	16	139	172	306	1502	11454	772	2229.5	1216
RE.9.25.2240 G3	2516.4	2266	2059	2276	2366	48	2125	48	2466	18	137	202	358	1687	12830	821	2366.5	1378
RE.9.25.2500 G3	2786.4	2526	2319	2536	2625	54	2385	54	2736	18	152	202	358	1887	14321	870	2508.5	1567
RE.9.25.2800 G3	3096	2826	2619	2836	2925	60	2685	60	3040	20	152	232	407	2118	16041	926	2664.5	1785



## Bearings with internal gear

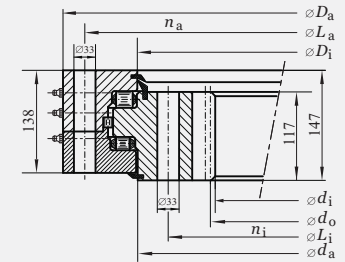
### \*R920 SERIES

JINB No.	Dimension				Fixing holes				Gear teeth			Tooth force		Basic load ratings				Weight
	D <sub>a</sub>	D <sub>i</sub>	d <sub>i</sub>	d <sub>a</sub>	L <sub>a</sub>	n <sub>a</sub>	L <sub>i</sub>	n <sub>i</sub>	d <sub>o</sub>	m	z	F <sub>z norm</sub>	F <sub>z max</sub>	Static		Dynamic		
														C <sub>or</sub>	C <sub>oa</sub>	C <sub>r</sub>	C <sub>a</sub>	
mm	mm	mm	mm	mm	-	mm	-	mm	mm	-	kN	kN	kN	kN	kN	kN	kg	
RI.9.20.1250 G3	1397	1219	1032	1218	1345	36	1145	36	1044	12	87	117	214	625	5917.5	424	1721	539
RI.9.20.1400 G3	1547	1369	1162	1368	1495	36	1295	36	1176	14	84	146	269	698	6626.5	449	1352	630
RI.9.20.1600 G3	1747	1569	1372	1568	1695	40	1495	40	1386	14	99	146	269	795	7572	481	1453	705
RI.9.20.1800 G3	1947	1769	1552	1768	1895	46	1695	46	1568	16	98	175	319	892	8517.5	511	1549	829
RI.9.20.2000 G3	2147	1969	1760	1968	2095	54	1895	54	1776	16	111	175	319	989	9463	540	1634	902



### \*R925 SERIES

JINB No.	Dimension				Fixing holes				Gear teeth			Tooth force		Basic load ratings				Weight
	D <sub>a</sub>	D <sub>i</sub>	d <sub>i</sub>	d <sub>a</sub>	L <sub>a</sub>	n <sub>a</sub>	L <sub>i</sub>	n <sub>i</sub>	d <sub>o</sub>	m	z	F <sub>z norm</sub>	F <sub>z max</sub>	Static		Dynamic		
														C <sub>or</sub>	C <sub>oa</sub>	C <sub>r</sub>	C <sub>a</sub>	
mm	mm	mm	mm	mm	-	mm	-	mm	mm	-	kN	kN	kN	kN	kN	kN	kg	
RI.9.25.1800 G3	1981	1763	1520	1774	1915	36	1675	36	1536	16	96	185	342	1424	10333	751	2109.5	1101
RI.9.25.2000 G3	2181	1963	1728	1974	2115	44	1875	44	1744	16	109	185	342	1577	11480	793	2234	1202
RI.9.25.2240 G3	2421	2203	1944	2214	2355	48	2115	48	1962	18	109	217	394	1763	12856	832	2371	1406
RI.9.25.2500 G3	2681	2463	2214	2474	2615	54	2375	54	2232	18	124	217	394	1963	14346	889	2510	1545
RI.9.25.2800 G3	2981	2763	2500	2774	2915	60	2675	60	2520	20	126	248	449	2194	16067	943	2666	1767



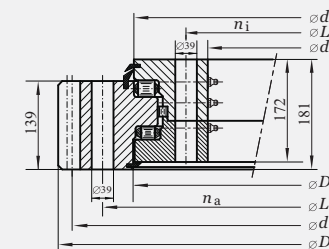
- For more information please contact JINB !



Bearings with external gear

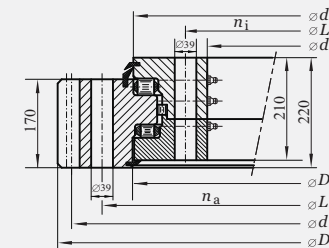
\*R932 SERIES

JINB No.	Dimension				Fixing holes				Gear teeth			Tooth force		Basic load ratings				Weight
	D <sub>a</sub>	D <sub>i</sub>	d <sub>i</sub>	d <sub>a</sub>	L <sub>a</sub>	n <sub>a</sub>	L <sub>i</sub>	n <sub>i</sub>	d <sub>o</sub>	m	z	F <sub>z norm</sub>	F <sub>z max</sub>	Static		Dynamic		
														C <sub>or</sub>	C <sub>oa</sub>	C <sub>r</sub>	C <sub>a</sub>	
mm	mm	mm	mm	mm	-	mm	-	mm	mm	-	kN	kN	kN	kN	kN	kN	kg	
RE.9.32.2240 G3	2552.4	2270	2022	2281	2395	40	2100	40	2502	18	139	228	401	1862	15459	1028	3280	1975
RE.9.32.2500 G3	2822.4	2530	2282	2541	2655	44	2360	44	2772	18	154	228	401	2085	17255	1091	3459	2260
RE.9.32.2800 G3	3136	2830	2582	2841	2955	48	2660	48	3080	20	154	260	465	2341	19329	1158	3700	2576
RE.9.32.3150 G3	3476	3180	2932	3191	3305	56	3010	56	3420	20	171	260	465	2640	21748	1235	3939.5	2828
RE.9.32.3550 G3	3889.6	3580	3332	3591	3705	66	3410	66	3828	22	174	295	525	2982	24513	1316	4203.5	3249
RE.9.32.4000 G3	4351.6	4030	3782	4041	4155	72	3860	72	4290	22	195	295	525	3367	27623	1405	4480.5	3752



\*R940 SERIES

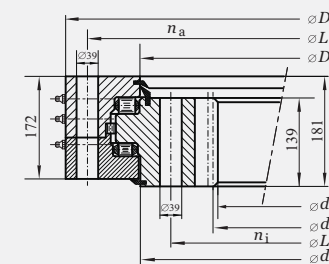
JINB No.	Dimension				Fixing holes				Gear teeth			Tooth force		Basic load ratings				Weight
	D <sub>a</sub>	D <sub>i</sub>	d <sub>i</sub>	d <sub>a</sub>	L <sub>a</sub>	n <sub>a</sub>	L <sub>i</sub>	n <sub>i</sub>	d <sub>o</sub>	m	z	F <sub>z norm</sub>	F <sub>z max</sub>	Static		Dynamic		
														C <sub>or</sub>	C <sub>oa</sub>	C <sub>r</sub>	C <sub>a</sub>	
mm	mm	mm	mm	mm	-	mm	-	mm	mm	-	kN	kN	kN	kN	kN	kN	kg	
RE.9.40.2800 G3	3136	2837	2562	2850	2965	48	2640	48	3080	20	154	296	525	2334	21574	1157	5122	3267
RE.9.40.3150 G3	3515.6	3187	2912	3200	3315	56	2990	56	3454	22	157	338	605	2633	24273	1233	5447	3812
RE.9.40.3550 G3	3911.6	3587	3312	3600	3715	66	3390	66	3850	22	175	338	605	2975	27358	1315	5795.5	4255
RE.9.40.4000 G3	4363.2	4037	3762	4050	4165	72	3840	72	4296	24	179	380	685	3360	30829	1402	6190.5	4805
RE.9.40.4500 G3	4867.2	4537	4262	4550	4665	84	4340	84	4800	24	200	380	685	3787	34685	1494	6626	5410



Bearings with internal gear

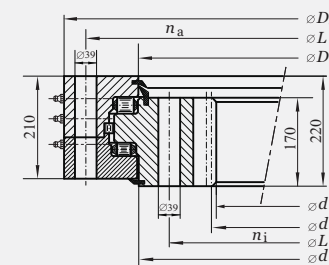
\*R932 SERIES

JINB No.	Dimension				Fixing holes				Gear teeth			Tooth force		Basic load ratings				Weight
	D <sub>a</sub>	D <sub>i</sub>	d <sub>i</sub>	d <sub>a</sub>	L <sub>a</sub>	n <sub>a</sub>	L <sub>i</sub>	n <sub>i</sub>	d <sub>o</sub>	m	z	F <sub>z norm</sub>	F <sub>z max</sub>	Static		Dynamic		
														C <sub>or</sub>	C <sub>oa</sub>	C <sub>r</sub>	C <sub>a</sub>	
mm	mm	mm	mm	mm	-	mm	-	mm	mm	-	kN	kN	kN	kN	kN	kN	kg	
RI.9.32.2240 G3	2458	2199	1908	2210	2380	40	2085	40	1926	18	107	240	445	1966	15505	1057	3286.5	2010
RI.9.32.2500 G3	2718	2459	2178	2470	2640	44	2345	44	2196	18	122	240	445	2189	17302	1119	3478.5	2210
RI.9.32.2800 G3	3018	2759	2460	2770	2940	48	2645	48	2780	20	124	278	508	2445	19376	1187	3697.5	2542
RI.9.32.3150 G3	3368	3109	2820	3120	3290	56	2995	56	3240	20	142	278	508	2744	21795	1260	2445	2807
RI.9.32.3550 G3	3768	3509	3190	3520	3690	66	3395	66	3212	22	146	305	559	3089	24560	1341	4218.5	3302
RI.9.32.4000 G3	4218	3959	3652	3970	4140	72	3845	72	3674	22	167	305	559	3471	27670	1427	4495.5	3664



\*R940 SERIES

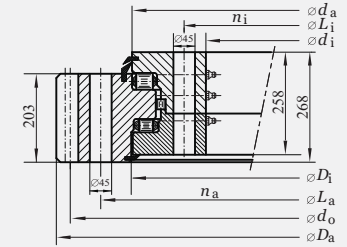
JINB No.	Dimension				Fixing holes				Gear teeth			Tooth force		Basic load ratings				Weight
	D <sub>a</sub>	D <sub>i</sub>	d <sub>i</sub>	d <sub>a</sub>	L <sub>a</sub>	n <sub>a</sub>	L <sub>i</sub>	n <sub>i</sub>	d <sub>o</sub>	m	z	F <sub>z norm</sub>	F <sub>z max</sub>	Static		Dynamic		
														C <sub>or</sub>	C <sub>oa</sub>	C <sub>r</sub>	C <sub>a</sub>	
mm	mm	mm	mm	mm	-	mm	-	mm	mm	-	kN	kN	kN	kN	kN	kN	kg	
RI.9.40.2800 G3	3038	2750	2460	2763	2960	48	2635	48	2480	20	124	314	577	2452	21706	1188	5133.5	3213
RI.9.40.3150 G3	3388	3100	2794	3113	3310	56	2985	56	2816	22	128	357	658	2751	24416	1262	5458	3683
RI.9.40.3550 G3	3788	3500	3190	3513	3710	66	3385	66	3212	22	146	357	658	3093	27513	1443	5806	4171
RI.9.40.4000 G3	4238	3950	3624	3963	4160	72	3835	72	3648	24	152	398	740	3478	30872	1428	6194	4810
RI.9.40.4500 G3	4738	4450	4128	4463	4660	84	4335	84	4152	24	173	398	740	3905	34729	1519	6629.5	5367



**Bearings with external gear**

\*R950 SERIES

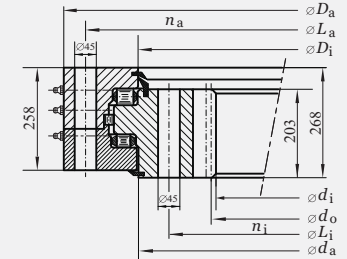
JINB No.	Dimension				Fixing holes				Gear teeth			Tooth force		Basic load ratings				Weight
	D <sub>a</sub>	D <sub>i</sub>	d <sub>i</sub>	d <sub>a</sub>	L <sub>a</sub>	n <sub>a</sub>	L <sub>i</sub>	n <sub>i</sub>	d <sub>o</sub>	m	z	F <sub>z norm</sub>	F <sub>z max</sub>	Static		Dynamic		
														C <sub>or</sub>	C <sub>oa</sub>	C <sub>r</sub>	C <sub>a</sub>	
mm	mm	mm	mm	mm	-	mm	-	mm	mm	-	kN	kN	kN	kN	kN	kN	kg	
RE.9.50.3150 G3	3571.2	3196	2885	3210	3350	48	2975	48	3504	24	146	420	760	3894	28222	1770	7443	5298
RE.9.50.3550 G3	3955.2	3596	3285	3610	3750	54	3375	54	3888	24	162	420	760	4402	31810	1887	7912.5	5830
RE.9.50.4000 G3	4411.2	4046	3735	4060	4200	60	3825	60	4344	24	181	420	760	4974	35846	2011	8426.5	6578
RE.9.50.4500 G3	4915.2	4546	4235	4560	4700	68	4325	68	4848	24	202	420	760	5609	40330	2144	9036	7456
RE.9.50.4750 G3	5179.2	4796	4485	4810	4950	76	4575	76	5112	24	213	420	760	5927	42573	2209	9291.5	7870



**Bearings with internal gear**

\*R950 SERIES

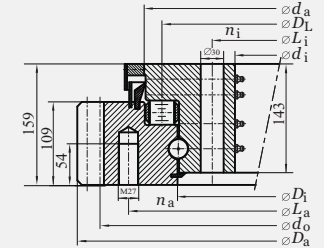
JINB No.	Dimension				Fixing holes				Gear teeth			Tooth force		Basic load ratings				Weight
	D <sub>a</sub>	D <sub>i</sub>	d <sub>i</sub>	d <sub>a</sub>	L <sub>a</sub>	n <sub>a</sub>	L <sub>i</sub>	n <sub>i</sub>	d <sub>o</sub>	m	z	F <sub>z norm</sub>	F <sub>z max</sub>	Static		Dynamic		
														C <sub>or</sub>	C <sub>oa</sub>	C <sub>r</sub>	C <sub>a</sub>	
mm	mm	mm	mm	mm	-	mm	-	mm	mm	-	kN	kN	kN	kN	kN	kN	kg	
RI.9.50.3150 G3	3415	3090	2736	3104	3325	48	2950	48	2760	24	115	440	820	4110	28285	1820	7449.5	5128
RI.9.50.3550 G3	3815	3490	3120	3504	3725	54	3350	54	3144	24	131	440	820	4618	31872	1935	7919	5916
RI.9.50.4000 G3	4265	3940	3576	3954	4175	60	3800	60	3600	24	150	440	820	5190	35908	2059	8432.5	6623
RI.9.50.4500 G3	4765	4440	4080	4454	4675	68	4300	68	4104	24	171	440	820	5825	40393	2189	9051	7427
RI.9.50.4750 G3	5015	4690	4320	4704	4925	76	4550	76	4344	24	181	440	820	6143	42635	2250	9297	7840



**Bearings with external gear**

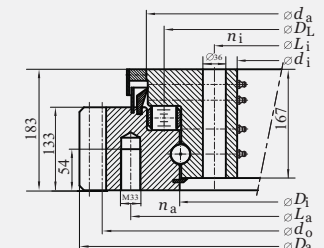
\*T132 SERIES

JINB No.	Dimension				Fixing holes				Gear teeth			Tooth force		Basic load ratings				Weight
	D <sub>a</sub>	D <sub>i</sub>	d <sub>i</sub>	d <sub>a</sub>	L <sub>a</sub>	n <sub>a</sub>	L <sub>i</sub>	n <sub>i</sub>	d <sub>o</sub>	m	z	F <sub>z norm</sub>	F <sub>z max</sub>	Static		Dynamic		
														C <sub>or</sub>	C <sub>oa</sub>	C <sub>r</sub>	C <sub>a</sub>	
mm	mm	mm	mm	mm	-	mm	-	mm	mm	-	kN	kN	kN	kN	kN	kN	kg	
TE.1.32.3550 G3	3772.8	3509	3358	3597	3638	76	3418	76	3712	16	232	165	294	1083	18904	319	2777	2028
TE.1.32.3750 G3	3980.8	3709	3558	3797	3846	80	3618	80	3936	16	246	165	294	1145	19971	325	2853.5	2186
TE.1.32.4000 G3	4220.8	3959	3808	4047	4086	84	3868	84	4176	16	261	165	294	1223	21305	333	2953	2278
TE.1.32.4250 G3	4476.8	4209	4058	4297	4342	90	4118	90	4416	16	276	165	294	1300	22639	341	3043.5	2455



\*T140 SERIES

JINB No.	Dimension				Fixing holes				Gear teeth			Tooth force		Basic load ratings				Weight
	D <sub>a</sub>	D <sub>i</sub>	d <sub>i</sub>	d <sub>a</sub>	L <sub>a</sub>	n <sub>a</sub>	L <sub>i</sub>	n <sub>i</sub>	d <sub>o</sub>	m	z	F <sub>z norm</sub>	F <sub>z max</sub>	Static		Dynamic		
														C <sub>or</sub>	C <sub>oa</sub>	C <sub>r</sub>	C <sub>a</sub>	
mm	mm	mm	mm	mm	-	mm	-	mm	mm	-	kN	kN	kN	kN	kN	kN	kg	
TE.1.40.4250 G3	4536	4200	4026	4306	4362	68	4098	68	4480	20	224	253	450	1403	26118	442	4127.5	3469
TE.1.40.4500 G3	4776	4450	4276	4556	4612	72	4348	72	4720	20	236	253	450	1486	27658	451	4253.5	3673
TE.1.40.4750 G3	5016	4700	4526	4805	4852	76	4598	76	4960	20	248	253	450	1570	29196	460	4376.5	3796
TE.1.40.4900 G3	5176	4850	4676	4956	5012	80	4748	80	5120	20	256	253	450	1620	30120	466	4446.5	4000

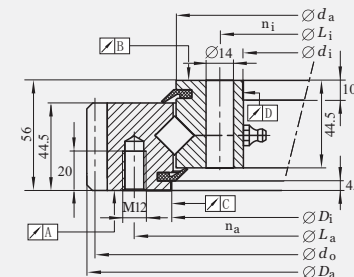


- For more information please contact JINB !

**Bearings with external gear**

\*X614 SERIES

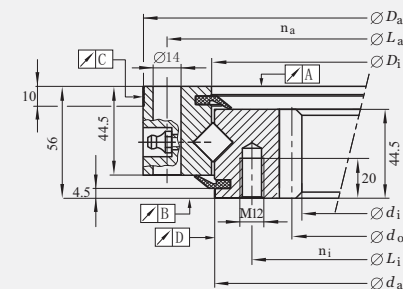
JINB No.	Dimension				Fixing holes				Gear teeth			Tooth force		Basic load ratings				Weight
	D <sub>a</sub>	D <sub>i</sub>	d <sub>i</sub>	d <sub>a</sub>	L <sub>a</sub>	n <sub>a</sub>	L <sub>i</sub>	n <sub>i</sub>	d <sub>o</sub>	m	z	F <sub>z norm</sub>	F <sub>z max</sub>	Static		Dynamic		
														C <sub>or</sub>	C <sub>oa</sub>	C <sub>r</sub>	C <sub>a</sub>	
mm	mm	mm	mm	mm	-	mm	-	mm	mm	-	kN	kN	kN	kN	kN	kN	kg	
<b>XE.6.14.0414 G1</b>	503.3	417	344	413	455	20	368	24	495	5	99	15.9	23.6	250	520	146	229	32
<b>XE.6.14.0544 G1</b>	640.3	547	474	543	585	28	498	32	630	6	105	21.3	31.5	330	680	170	270	44
<b>XE.6.14.0644 G1</b>	742.3	647	574	643	685	32	598	36	732	6	122	21.3	31.5	395	800	185	290	52
<b>XE.6.14.0744 G1</b>	838.1	747	674	743	785	36	698	40	828	6	138	21.3	31.5	455	930	200	315	59
<b>XE.6.14.0844 G1</b>	950.1	847	774	843	885	36	798	40	936	8	117	28.3	42	510	1050	215	340	71
<b>XE.6.14.0944 G1</b>	1046.1	947	874	943	985	40	898	44	1032	8	129	28.3	42	580	1170	227	360	77
<b>XE.6.14.1094 G1</b>	1198.1	1097	1024	1093	1135	44	1048	48	1184	8	148	28.3	42	670	1360	246	390	91



**Bearings with internal gear**

\*X614 SERIES

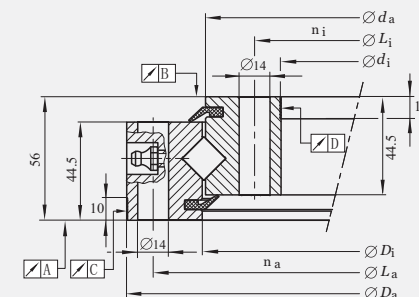
JINB No.	Dimension				Fixing holes				Gear teeth			Tooth force		Basic load ratings				Weight
	D <sub>a</sub>	D <sub>i</sub>	d <sub>i</sub>	d <sub>a</sub>	L <sub>a</sub>	n <sub>a</sub>	L <sub>i</sub>	n <sub>i</sub>	d <sub>o</sub>	m	z	F <sub>z norm</sub>	F <sub>z max</sub>	Static		Dynamic		
														C <sub>or</sub>	C <sub>oa</sub>	C <sub>r</sub>	C <sub>a</sub>	
mm	mm	mm	mm	mm	-	mm	-	mm	mm	-	kN	kN	kN	kN	kN	kN	kg	
<b>XI.6.14.0414 G1</b>	484	415	325	411	460	24	375	24	335	5	67	17.7	26.2	250	520	146	229	31
<b>XI.6.14.0544 G1</b>	614	545	444	541	590	32	505	32	456	6	76	23.7	35	330	680	170	270	43
<b>XI.6.14.0644 G1</b>	714	645	546	641	690	36	605	36	558	6	93	23.7	35	395	800	185	290	50
<b>XI.6.14.0744 G1</b>	814	745	648	741	790	40	705	40	660	6	110	23.7	35	455	930	200	315	58
<b>XI.6.14.0844 G1</b>	914	845	736	841	890	40	805	40	752	8	94	31.4	46.7	510	1050	215	340	69
<b>XI.6.14.0944 G1</b>	1014	945	840	941	990	44	905	44	856	8	107	31.4	46.7	580	1170	227	360	76
<b>XI.6.14.1094 G1</b>	1164	1095	984	1091	1140	48	1055	48	1000	8	125	31.4	46.7	670	1360	246	390	91



**Bearings ungeared**

\*X614 SERIES

JINB No.	Dimension				Fixing holes				Basic load ratings				Weight
	D <sub>a</sub>	D <sub>i</sub>	d <sub>i</sub>	d <sub>a</sub>	L <sub>a</sub>	n <sub>a</sub>	L <sub>i</sub>	n <sub>i</sub>	Static		Dynamic		
									C <sub>or</sub>	C <sub>oa</sub>	C <sub>r</sub>	C <sub>a</sub>	
mm	mm	mm	mm	mm	-	mm	-	kN	kN	kN	kN	kg	
<b>XU.6.14.0414</b>	484	415	344	413	460	24	368	24	250	520	146	229	28
<b>XU.6.14.0544</b>	614	545	474	543	590	32	498	32	330	680	170	270	38
<b>XU.6.14.0644</b>	714	645	574	643	690	36	598	36	395	800	185	290	44
<b>XU.6.14.0744</b>	814	745	674	743	790	40	698	40	455	930	200	315	52
<b>XU.6.14.0844</b>	914	845	774	843	890	40	798	40	510	1050	215	340	60
<b>XU.6.14.0944</b>	1014	945	874	943	990	44	898	44	580	1170	227	360	67
<b>XU.6.14.1094</b>	1164	1095	1024	1093	1140	48	1048	48	670	1360	246	390	77



- For more information please contact JINB !



## Ball Slewing Rings with flange rings

JINB No.	Equivalences		
<b>VE.20.0414 G1</b>	VLA 20 0414 N	91-20 0411/1-07112	RKS.22.0411
<b>VE.20.0544 G1</b>	VLA 20 0544 N	91-20 0541/1-07122	RKS.22.0574
<b>VE.20.0644 G1</b>	VLA 20 0644 N	91-20 0641/1-07132	RKS.22.0641
<b>VE.20.0744 G1</b>	VLA 20 0744 N	91-20 0741/1-07142	RKS.22.0741
<b>VE.20.0844 G1</b>	VLA 20 0844 N	91-20 0841/1-07152	RKS.22.0841
<b>VE.20.0944 G1</b>	VLA 20 0944 N	91-20 0941/1-07162	RKS.22.0941
<b>VE.20.1094 G1</b>	VLA 20 1094 N	91-20 1091/1-07172	RKS.22.1091
<b>VI.20.0414 G1</b>	VL I 20 0414 N	92-20 0411/1-07212	RKS.22.0411
<b>VI.20.0544 G1</b>	VL I 20 0544 N	92-20 0541/1-07222	RKS.22.0574
<b>VI.20.0644 G1</b>	VL I 20 0544 N	92-20 0641/1-07232	RKS.22.0641
<b>VI.20.0744 G1</b>	VL I 20 0744 N	92-20 0741/1-07242	RKS.22.0741
<b>VI.20.0844 G1</b>	VL I 20 0844 N	92-20 0841/1-07252	RKS.22.0841
<b>VI.20.0944 G1</b>	VL I 20 0944 N	92-20 0941/1-07262	RKS.22.0941
<b>VI.20.1094 G1</b>	VL I 20 1094 N	92-20 1091/1-07272	RKS.22.1091
<b>VU.20.0414</b>	VL U 20 0414	90-20 0411/0-07012	RKS.23.0411
<b>VU.20.0544</b>	VL U 20 0544	90-20 0541/0-07022	RKS.23.0541
<b>VU.20.0644</b>	VL U 20 0644	90-20 0641/0-07032	RKS.23.0641
<b>VU.20.0744</b>	VL U 20 0744	90-20 0741/0-07042	RKS.23.0741
<b>VU.20.0844</b>	VL U 20 0844	90-20 0841/0-07052	RKS.23.0841
<b>VU.20.0944</b>	VL U 20 0944	90-20 0941/0-07062	RKS.23.0941
<b>VU.20.1094</b>	VL U 20 1094	90-20 1091/0-07072	RKS.23.1091

## Cross Roller Slewing Rings

JINB No.	Equivalences
<b>XU.6.14.0414</b>	XSU 14 0414
<b>XU.6.14.0544</b>	XSU 14 0544
<b>XU.6.14.0644</b>	XSU 14 0644
<b>XU.6.14.0744</b>	XSU 14 0744
<b>XU.6.14.0844</b>	XSU 14 0844
<b>XU.6.14.0944</b>	XSU 14 0944
<b>XU.6.14.1094</b>	XSU 14 1094
<b>XI.6.14.0414 G1</b>	XSI 14 0414 N
<b>XI.6.14.0544 G1</b>	XSI 14 0544 N
<b>XI.6.14.0644 G1</b>	XSI 14 0644 N
<b>XI.6.14.0744 G1</b>	XSI 14 0744 N
<b>XI.6.14.0844 G1</b>	XSI 14 0844 N
<b>XI.6.14.0944 G1</b>	XSI 14 0944 N
<b>XI.6.14.1094 G1</b>	XSI 14 1094 N
<b>XE.6.14.0414 G1</b>	XSA 14 0414 N
<b>XE.6.14.0544 G1</b>	XSA 14 0544 N
<b>XE.6.14.0644 G1</b>	XSA 14 0644 N
<b>XE.6.14.0744 G1</b>	XSA 14 0744 N
<b>XE.6.14.0844 G1</b>	XSA 14 0844 N
<b>XE.6.14.0944 G1</b>	XSA 14 0944 N
<b>XE.6.14.1094 G1</b>	XSA 14 1094 N

## Ball Slewing Rings

JINB No.	Equivalences			
<b>SE.6.20.0414 G1</b>	VSA 20 0414 N	11-20 0411/1-02112	061.20.0414.500.01.1503	RKS.061.20.0414
<b>SE.6.20.0544 G1</b>	VSA 20 0544 N	11-20 0541/1-02122	061.20.0544.500.01.1503	RKS.061.20.0544
<b>SE.6.20.0644 G1</b>	VSA 20 0644 N	11-20 0641/1-02132	061.20.0644.500.01.1503	RKS.061.20.0644
<b>SE.6.20.0744 G1</b>	VSA 20 0744 N	11-20 0741/1-02142	061.20.0744.500.01.1503	RKS.061.20.0744
<b>SE.6.20.0844 G1</b>	VSA 20 0844 N	11-20 0841/1-02152	061.20.0844.500.01.1503	RKS.061.20.0844
<b>SE.6.20.0944 G1</b>	VSA 20 0944 N	11-20 0941/1-02162	061.20.0944.500.01.1503	RKS.061.20.0944
<b>SE.6.20.1094 G1</b>	VSA 20 1094 N	11-20 1091/1-02172	061.20.1094.500.01.1503	RKS.061.20.1094
<b>SE.6.25.0755 G1</b>	VSA 25 0755 N	11-25 0755/1-04140	---	---
<b>SE.6.25.0855 G1</b>	VSA 25 0855 N	11-25 0855/1-03110	061.25.0855.500.11.1503	---
<b>SE.6.25.0955 G1</b>	VSA 25 0955 N	11-25 0955/1-03120	061.25.0955.500.11.1503	---
<b>SE.6.25.1055 G1</b>	VSA 25 1055 N	11-25 1055/1-03130	061.25.1055.500.11.1503	---
<b>SI.6.20.0414 G1</b>	VSI 20 0414 N	12-20 0411/1-02212	062.20.0414.500.01.1503	RKS.062.20.0414
<b>SI.6.20.0544 G1</b>	VSI 20 0544 N	12-20 0541/1-02222	062.20.0544.500.01.1503	RKS.062.20.0544
<b>SI.6.20.0644 G1</b>	VSI 20 0644 N	12-20 0641/1-02232	062.20.0644.500.01.1503	RKS.062.20.0644
<b>SI.6.20.0744 G1</b>	VSI 20 0744 N	12-20 0741/1-02242	062.20.0744.500.01.1503	RKS.062.20.0744
<b>SI.6.20.0844 G1</b>	VSI 20 0844 N	12-20 0841/1-02252	062.20.0844.500.01.1503	RKS.062.20.0844
<b>SI.6.20.0944 G1</b>	VSI 20 0944 N	12-20 0941/1-02262	062.20.0944.500.01.1503	RKS.062.20.0944
<b>SI.6.20.1094 G1</b>	VSI 20 1094 N	12-20 1091/1-02272	062.20.1094.500.01.1503	RKS.062.20.1094
<b>SI.6.25.0755 G1</b>	VSI 25 0755 N	12-25 0755/1-04240	---	---
<b>SI.6.25.0855 G1</b>	VSI 25 0855 N	12-25 0855/1-03210	062.25.0855.500.11.1503	---
<b>SI.6.25.0955 G1</b>	VSI 25 0955 N	12-25 0955/1-03220	062.25.0955.500.11.1503	---
<b>SI.6.25.1055 G1</b>	VSI 25 1055 N	12-25 1055/1-03230	062.25.1055.500.11.1503	---
<b>SU.6.20.0414</b>	VSU 20 0414	10-20 0411/0-02012	060.20.0414.500.01.1503	RKS.060.20.0414
<b>SU.6.20.0544</b>	VSU 20 0544	10-20 0541/0-02022	060.20.0544.500.01.1503	RKS.060.20.0544
<b>SU.6.20.0644</b>	VSU 20 0644	10-20 0641/0-02032	060.20.0644.500.01.1503	RKS.060.20.0644
<b>SU.6.20.0744</b>	VSU 20 0744	10-20 0741/0-02042	060.20.0744.500.01.1503	RKS.060.20.0744
<b>SU.6.20.0844</b>	VSU 20 0844	10-20 0841/0-02052	060.20.0844.500.01.1503	RKS.060.20.0844
<b>SU.6.20.0944</b>	VSU 20 0944	10-20 0941/0-02062	060.20.0944.500.01.1503	RKS.060.20.0944
<b>SU.6.20.1094</b>	VSU 20 1094	10-20 1091/0-02072	060.20.1094.500.01.1503	RKS.060.20.1094
<b>SU.6.25.0755</b>	VSU 25 0755	10-25 0755/0-04040	---	---
<b>SU.6.25.0855</b>	VSU 25 0855	10-25 0855/0-03010	060.25.0855.500.11.1503	---
<b>SU.6.25.0955</b>	VSU 25 0955	10-25 0955/0-03020	060.25.0955.500.11.1503	---
<b>SU.6.25.1055</b>	VSU 25 1055	10-25 1055/0-03030	060.25.1055.500.11.1503	---



◀ Tank



◀ Cargo ship

▼ Radar



Excavator ▶



◀ Tower crane



▶ Heavy truck





**JINB<sup>®</sup>** 上海锦承滚动轴承有限公司  
SHANGHAI JINB BEARING CO.,LTD.

地址：上海市浦东新区塘桥新路 201 弄东方天伦大厦 1204 室

ADD: Rm.1204, Dongfang Tianlun Bldg., No.201 Tangqiao Xin Rd. Shanghai, China

电话 TEL:0086-21-61536567

传真 FAX:0086-21-61294432

邮箱 EMAIL: JB@JINBEARINGS.COM

网址 WEB: WWW.JINBEARINGS.COM